



## 68 Bideford Road, Stockport, SK2 5AT

This three-bedroom semi-detached property is perfectly situated on the popular Bideford Road, offering generous living space across two floors, this property is perfectly positioned just a short distance from local amenities, excellent schools, and convenient bus routes.

Upon entering, you are welcomed into the entrance hallway, which provides access to the first floor. The bright, bay-fronted reception room offers views of the front of the property. To the rear, an additional reception room overlooks the garden and offers versatile space, easily adaptable to suit a range of needs. The kitchen, located adjacent to the rear reception room, is fitted with a range of eye-level and base units, providing plenty of storage and space for appliances.

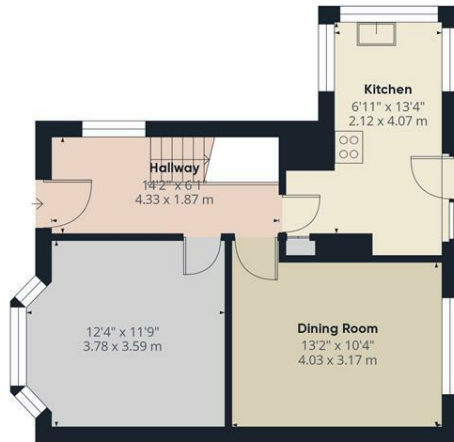
Upstairs, the property boasts three well-proportioned bedrooms, including two spacious double rooms. The first-floor bathroom is fitted with a bath, wash basin, and WC.

Externally, the property benefits from its corner plot. The private rear garden is ideal for entertaining.

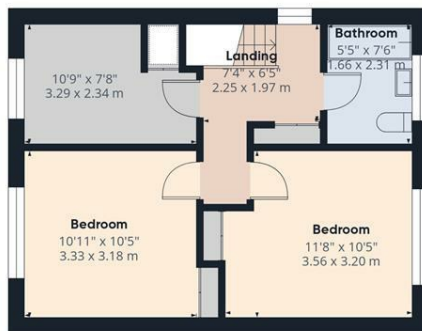
This wonderful home is perfect for those seeking both space and practicality, all within a highly desirable location.

- **\*\*\* NO CHAIN \*\*\***
- **Three Bedroom Semi-Detached**
- **Driveway And Rear Garden**
- **Two Reception Rooms**
- **Close To Great Parks**
- **Popular Location**

**£230,000**



Floor 0



Floor 1

Approximate total area<sup>m</sup>  
892 ft<sup>2</sup>  
83.1 m<sup>2</sup>

(1) Excluding balconies and terraces

Calculations reference the RICS IPMS 3C standard. Measurements are approximate and not to scale. This floor plan is intended for illustration only.

GIRAFFE360



Energy Efficiency Rating		Current	Potential
<i>Very energy efficient - lower running costs</i>			
(92 plus) <b>A</b>			
(81-91) <b>B</b>			
(69-80) <b>C</b>			
(55-68) <b>D</b>			
(39-54) <b>E</b>			
(21-38) <b>F</b>			
(1-20) <b>G</b>			
<i>Not energy efficient - higher running costs</i>			
<b>England &amp; Wales</b>	EU Directive 2002/91/EC		

Environmental Impact (CO <sub>2</sub> ) Rating		Current	Potential
<i>Very environmentally friendly - lower CO<sub>2</sub> emissions</i>			
(92 plus) <b>A</b>			
(81-91) <b>B</b>			
(69-80) <b>C</b>			
(55-68) <b>D</b>			
(39-54) <b>E</b>			
(21-38) <b>F</b>			
(1-20) <b>G</b>			
<i>Not environmentally friendly - higher CO<sub>2</sub> emissions</i>			
<b>England &amp; Wales</b>	EU Directive 2002/91/EC		